



Goldhurst Terrace NW6





Goldhurst Terrace, NW6

£600,000, Leasehold - Share of Freehold

Camden Band D

- Raised ground floor 2 bedroom flat
- Bright 20" open plan reception kitchen with high ceilings and bay window
- 556 sq ft / 51.65 sq m
- Double bedroom with garden views
- Flexible second bedroom/study
- Storage space
- Set within beautiful period house
- Peaceful South Hampstead location
- 4 minute walk to Finchley road station (Jubilee and Metropolitan lines)
- Chain Free and Share of Freehold

Belsize Park
208 Haverstock Hill
NW3 2AG
Sales 020 7431 1234
Lettings 020 7431 3104
nw3@parkheath.com

South Hampstead
8a Canfield Gardens
NW6 3BS
Sales 020 7625 4567
Lettings 020 7644 0800
nw6@parkheath.com

West Hampstead
192 West End Lane
NW6 1SG
Sales & Lettings
Tel 020 7794 7111
192@parkheath.com

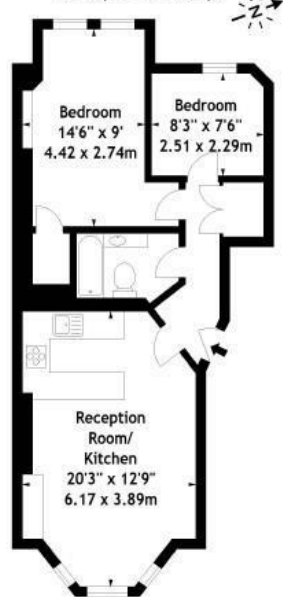
Kentish Town
148 Kentish Town Rd
NW1 9QB
Tel 020 7485 0400
kt@parkheath.com

Kensal Rise
54-56 Chamberlayne Rd
NW10 3JH
Tel 020 8960 4845
kensal@parkheath.com

Property Management
148 Kentish Town Rd
NW1 9QB
020 7433 6174
pm@parkheath.com

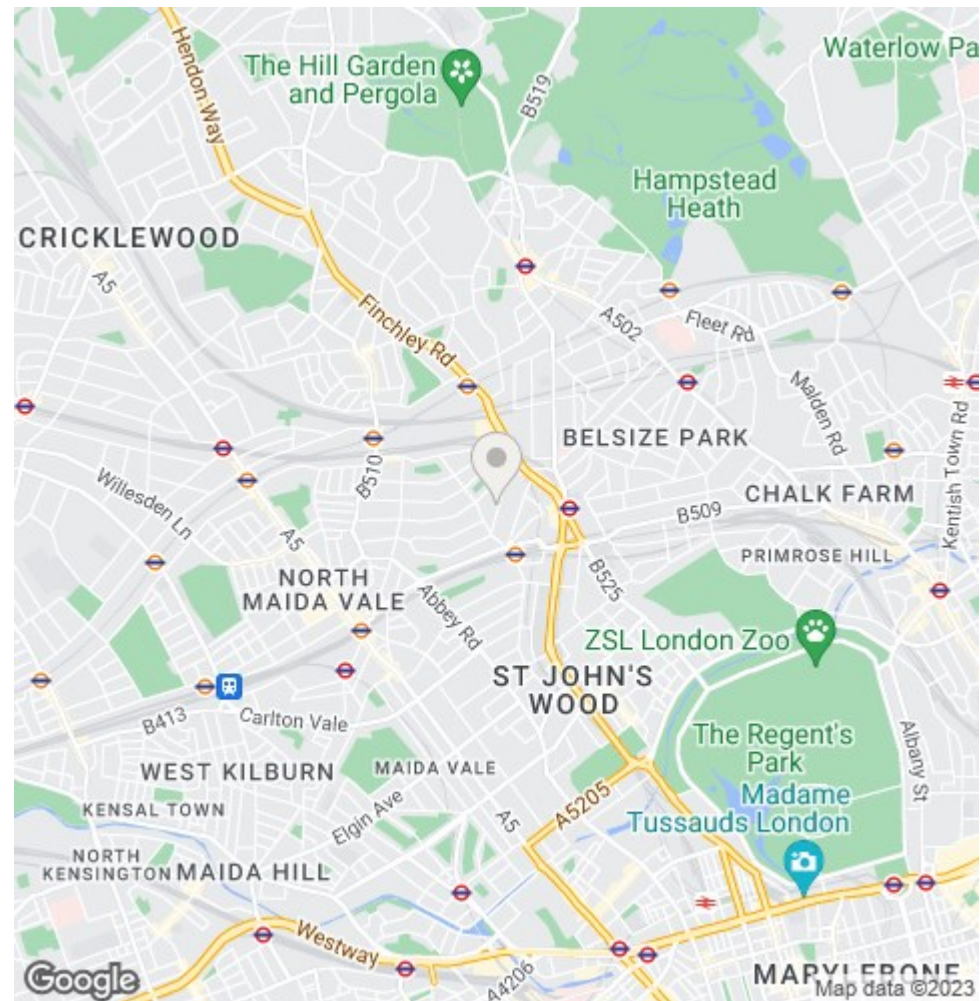
Parkheath
Sold on Service

Goldhurst Terrace, NW6
Approx. Gross Internal Area
556 Sq Ft - 51.65 Sq M



Raised Ground Floor

Measured in accordance with RICS guidelines. Every attempt is made to ensure accuracy, however all measurements are approximate. This floor plan is for illustrative purposes only and is not to scale.
© Detography Ltd 2012
Photographs • Floorplans • Virtual Tours
Tel: 0845 643 4401 www.detoazphv.com



The particulars do not constitute part of an offer or contract. The particulars, including text, photographs and plans, are for the guidance only of prospective purchasers/tenants and must not be relied upon as statements of fact. The descriptions provided therein represent the opinion of the author and whilst given in good faith should not be construed as statements of fact. Nothing in these particulars shall be deemed a statement that the property is in good condition or otherwise or that any services or facilities are in good working order. All measurements are approximate